

# PRODUKTINFORMATION

## Steel deck Air, SL

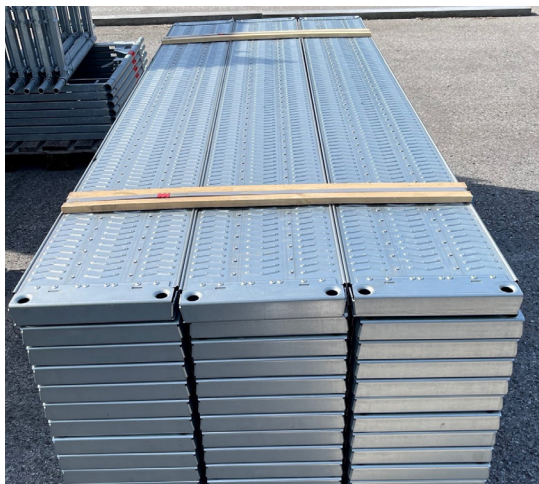
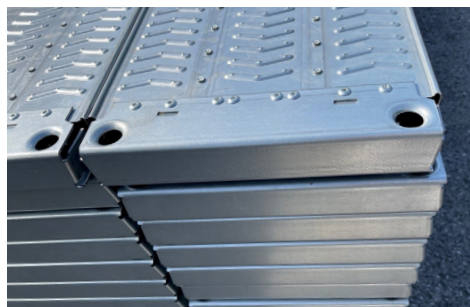
New steel deck Air with light weight and lower construction height of only 5.4 cm.

The integrated carry-handles starting at 1.5 m bay length are optimizing the handling at the construction site. Special embossed modular pattern guarantees a slip resistant working surface. Long-lasting and stable product. Partial dismantling fieldwide possible. Approval still in progress.

| Article-No. | Dimensions (cm)      | LC | PU | Weight (kg) |
|-------------|----------------------|----|----|-------------|
| 5FSLN63005  | 74 L x 32 W x 5.4 H  | 6  | 60 | 5.8         |
| 5FSLN63004  | 110 L x 32 W x 5.4 H | 6  | 60 | 7.6         |
| 5FSLN63003  | 150 L x 32 W x 5.4 H | 6  | 60 | 10.2        |
| 5FSLN63002  | 200 L x 32 W x 5.4 H | 5  | 60 | 13.0        |
| 5FSLN63001  | 250 L x 32 W x 5.4 H | 4  | 60 | 15.9        |
| 5FSLN63000  | 300 L x 32 W x 5.4 H | 3  | 60 | 18.8        |

## ADVANTAGES

- ✓ light, robust by special galvanization
- ✓ low component height of only 5.4 cm and improved stackability
- ✓ optimized anti-slip-surface by special embossed modular pattern on each arrowrib
- ✓ shifting lock during stacking in cross & longitudinal direction
- ✓ recessed carry-handles starting at length of 1.5 m fast assembly
- ✓ use of new type, high strength steel blind rivets at the head fitting



Technical note: Applied for approval.

\*Subject to change



ALTRAD PLETTAC ASSCO GMBH  
Adam-Opel Straße 7 – 58840 Plettenberg, Germany  
Tel.: +49 2391 815-01 – E-Mail: info@plettac-assco.de  
[www.pleltac-assco.de](http://www.pleltac-assco.de)