

PRODUCT INFORMATION

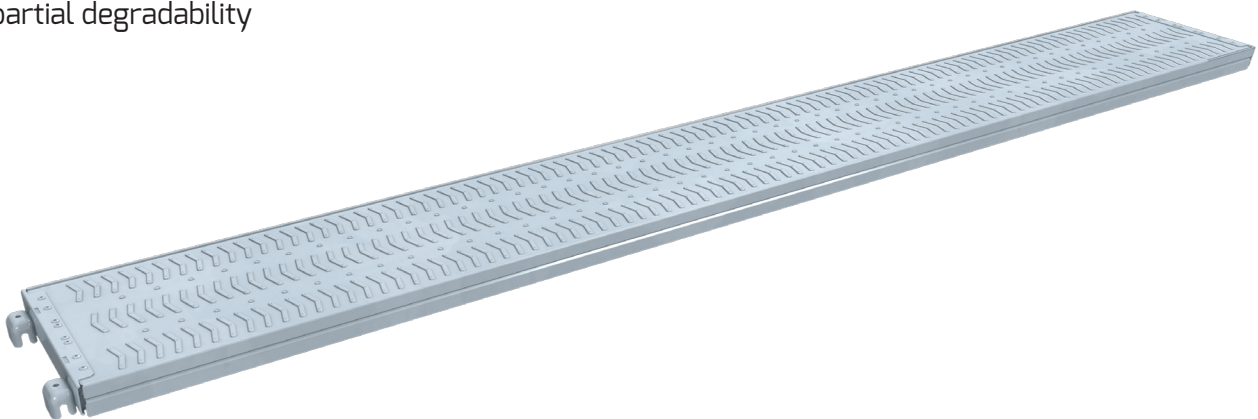
Lightweight steel deck Air quadro

New lightweight steel deck with light weight and lower construction height of only 5.4 cm. For the use in the facade scaffolding assco quadro or in the modular scaffolding assco futuro. The integrated carry-handles starting at 1.5 m field length are optimizing the handling at the construction site. Special embossed modular pattern guarantees a slip resistant working surface. Long-lasting, stable product for use at construction sites. By using this steel deck, scaffoldings can be erected and dismantled partially.

Code	Dimension (cm)	LC	PU	Weight
5F00701040	73 L x 32 W x 5,4 H	6	60	4.2 kg
5F00701041	109 L x 32 W x 5,4 H	6	60	6.4 kg
5F00701042	140 L x 32 W x 5,4 H	6	60	8.3 kg
5F00701043	157 L x 32 W x 5,4 H	6	60	9.5 kg
5F00701044	207 L x 32 W x 5,4 H	5	60	13.0 kg
5F00701045	257 L x 32 W x 5,4 H	4	60	15.9 kg
5F00701046	307 L x 32 W x 5,4 H	3	60	18.7 kg

ADVANTAGES

- ✓ light, robust by special galvanization
- ✓ pretty low component height of only 5.4 cm and improved stackability
- ✓ optimized slip-security by special embossed modular pattern on each arrowrib
- ✓ shifting lock during stacking in cross & longitudinal direction
- ✓ recessed carry-handles starting at length of 1.5 m fast assembly, no collisions during stacking
- ✓ use of new type, high strength steel blind rivets at the head fitting
- ✓ partial degradability



Technical note: Applied for approval.

Dimensions in mm / Subject to errors and technical changes.